

CLERK OF THE COUNTY ASSEMBLY

Spring Valley Area
Along James Nyaga Crescent Road
Off Embu-Meru Highway
Opposite Faith House

P.O BOX 140-60100
EMBU
TEL: 068-2231208/0734867105
E-mail: countyassemblyofembu@gmail.com

12/02/25

REF: CAE/LEG/16/ VOL. 9/ (9)

DATE: 12TH FEBRUARY, 2025

The County Executive Committee Member
Lands, Mining, Physical Planning, Housing and Urban Development
Embu County Government
P O Box 36-60100
Embu

Dear

RE: RESOLUTION OF THE COUNTY ASSEMBLY

The County Assembly in its sitting held on Wednesday, 12th February, 2025 resolved to adopt the Report of the Sectoral Committee on Lands, Mining, Housing, Physical Planning and Urban Development on the Embu Municipality Integrated Development Plan 2023 – 2027 tabled in the County Assembly of Embu on Tuesday 11th February, 2025.

Pursuant to Standing Order 209, of the County Assembly Standing Orders (3rd Edition) on implementation of County Assembly Resolutions you are required to implement the resolutions within sixty (60) days. The Standing Order 209 provides thus:-

“Within sixty days of a resolution of the County Assembly or adoption of a report of a select committee, the relevant County Executive Committee Member under whose portfolio the Implementation of the resolution falls shall provide a report to the relevant committee of the County Assembly in accordance with Article 183(3) of the Constitution.”

Enclosed, find a copy of the said report for your necessary action.

Thank you for your cooperation.

Yours sincerely

JIM G. KAUMA
CLERK OF THE COUNTY ASSEMBLY

Copy to: The County Secretary and Head of Public Service
County Government of Embu
The Chairman
Implementation Committee

Encls

46

For Preparation for Training

[Handwritten signature]
SCA
A/H/S

EMBU COUNTY GOVERNMENT



OFFICE OF THE COUNTY SECRETARY AND HEAD OF PUBLIC SERVICE
Mobile: +254 771 304 003/+254 703 192 924 Tel: 068-2231174/2231175
Address: P. O. Box 36 - 60100 Embu Town House Email: csembucounty@gmail.com

Ref: **EC/CS/CA.CS/VOL.VI/103** Date: 29th January, 2025

The Clerk
County Assembly of Embu
P.O. Box 140-60100
EMBU

[Handwritten signature]
13
John Speaker
F 71
[Handwritten signature]
4/2/25

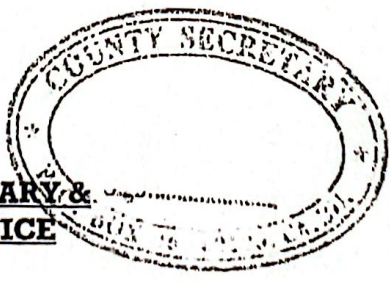
RE: EMBU INTEGRATED DEVELOPMENT PLAN (IDEP)

Pursuant to the requirement for all legislative tools be presented for adoption by the County Assembly, here attached, find the Municipality of Embu Integrated Development Plan (IDeP).

Thank you for your continued support.

[Handwritten signature]

Erastus Macharia
**FOR: COUNTY SECRETARY &
HEAD OF PUBLIC SERVICE**



19
Chuk 1/c office
for forward to County
Appreciation by the CEO.
[Handwritten signature]
4/2/25

Encl.

Copy to: **County Executive Committee Member**
LANDS, MINING, HOUSING, PHYSICAL PLANNING AND URBAN DEVELOPMENT

(3)
JUPES
pls TNA
[Handwritten signature]
4/2/25

Reviewed
6/2/25
4/2/25
03 FEB 2025
[Handwritten signature]

MUNICIPALITY OF EMBU



EMBU COUNTY GOVERNMENT

INTEGRATED DEVELOPMENT PLAN

2023- 2027

Revised 2024

FORWARD

Statement from CECM for Urban Development



The preparation of this municipality of Embu Integrated Development Plan (IDeP), affirms the seriousness the Embu County Government towards urban development, which is a global agenda of “*the Future is Urban*”. The plan forms a basis for governance integrity, efficient management and administration, effective resource utilization, accountability and transparency. The Plan depicts activities, programs and strategies for Embu Municipal Board in order to make the Municipality of Embu a gem among the urban areas. Thus, the plan is informed by the Embu County Integrated Plan (CIDP) and the various international and national and local laws and policies. The IDeP endeavours to establish mechanism for orderly and sustainable development for provision of social, economic, and physical infrastructure, provide high quality services, harness and promote sustainable development in the Municipality of Embu.

Sincerely

A handwritten signature in blue ink, appearing to read 'Raymond Kinyua', written over a faint grid pattern.

Raymond Kinyua
CECM for Urban Development

Statement from Chairperson Embu Municipal Board



It is my pleasure to present the 2023-2027 Municipality of Embu Integrated Development Plan (IDeP), which postulates the Municipality's Development blue print. This plan is a coalition of the inputs of the Municipal Board Members, Urban Development Department Officers, Members of the County Assembly, Business Community, Municipality of Embu residents, Development partners and other publics. This IDeP forms an integral part of the County Integrated Development Plan (CIDP) and the development activities reflected in the Municipality's Strategic Plan, thus, impacting immensely to the county-wide development plan. The development in this IDeP is in tandem with the strategic focus of the Municipality's mission, vision and values in order to improve the wellbeing of the residents of Embu Municipality. Consequently, the activities implemented will seek to uphold integrity in governance, improve mobility and connectivity, ensure sustainable environment, and improve vibrancy of Embu economy. The development agenda takes into consideration the views of the public and the desire of the Municipal Board to get Embu Municipality attain a city status in the near future. The Embu Municipal Board's strong commitment to provide world-class municipal services for an exceptional community underlies the IDeP objective. The Board seeks a comprehensive process and a responsive budget that balances the diverse needs of the Municipality of Embu residents, through emphasis on accountability, partnership, innovation, efficiency and effectiveness. The Board conveys appreciation to H.E the Governor of Embu County for the support.

Sincerely

A handwritten signature in blue ink, appearing to read 'Esther Nthiga', written over a horizontal line.

Dr. Esther Nthiga
Embu Municipal Board Chairperson

EXECUTIVE SUMMARY

The Embu Municipal Integrated Development Plan, 2023-2027 is the second to be formulated by the Embu Municipal Board to actualize the provisions of the Constitution 2010, Urban Areas and Cities Act, 2011, amended 2012, 2019, and the Public Finance Management Act, 2012. The plan guides the execution of priority projects and programs within Embu Municipality by leveraging heavily on the Embu County CIDP 2023-2027. This IDeP was revised in 2025 to accommodate the development demands as per the residents of the municipality.

The plan has five chapters. Chapter one provides the general information of the Municipality of Embu by detailing the physical, topographical, ecological, climatic and demographic profile. It enumerates the administrative as well as political units within the Municipality jurisdiction.

Chapter two provides the legal and policy framework by looking into international and national laws and policies. The chapter references the SDGs and the New Urban Agenda as the springboard for the plan. Further, the chapter embraces the linkage of the plan to the Constitution of Kenya 2010, County Government 2012, Urban Areas and Cities Act 2011 amended 2012, 2019, Physical and Land Use Planning Act 2019, Environmental Management and Coordination Act 1999, National Urban Development Policy, the National Land Policy, Vision 2030, MTP IV goals, National Spatial Plan and the Embu CIDP.

Chapter three highlights Municipality of Embu institutional framework, its functions as envisaged in the UACA 2011 and the Embu Municipality Charter. It details the organizational structure and gives an analysis of various stakeholders.

Chapter four forms the core basis of this plan by laying out the development priorities, programs and projects. It outlines the goals of the plan and the strategies of achieving them as well as the approximated costs.

Chapter five outlines the projects and programs implementation process, monitoring and evaluation as well as the formative and summative review. It details the proposed sources of funds and articulates the expected proportion. The chapter gives a proposed monitoring and evaluation guide/template.

CONTENTS

FORWARD	iii
Statement from CECM for Urban Development.....	iii
EXECUTIVE SUMMARY	v
CONTENTS.....	vi
LIST OF ACRONYMS AND ABBREVIATIONS	x
CHAPTER ONE:	1
GENERAL INFORMATION	1
1.0 Introduction	1
1.1 Historical Background of Embu Municipality.....	1
1.2 Integrated Development Plan (IDeP).....	2
1.2.1 Purpose.....	2
1.2.2 Objectives	2
1.2.3 Specific Objectives	2
1.3 Location	2
1.3.1 Position and Size of the Municipality	2
The Municipality lies on an area of approximately 102 square kms and with a radius of about approximate 10 km (6 miles) in size.....	2
1.3.2 Administrative Units.....	3
1.3.3 Political units	3
1.4 Physiographic and Natural Conditions.....	4
1.5.1 Physical and Topographic Features	4
1.5.2 Ecological and Climatic Conditions	4
1.6 Demographic Features.....	4
1.6.1 Urban Population	4
CHAPTER TWO:	6
LEGAL AND POLICY FRAMEWORK AND IDEP LINKAGES	6
2.1 Policy and Legal Framework	6
2.2. International and Regional Conventions	6
2.2.1 Sustainable Development Goals	6
2.2.2. New Urban Agenda	8
2.3 National Legal Framework	8
2.3.1. Constitution of Kenya 2010	8
2.3.2. County Government Act 2012	9
2.3.3. Urban Areas and Cities Act	9
2.3.4 Physical and Land Use Planning Act 2019.....	10

2.3.5. Environmental Management and Coordination Act of 1999.....	1 0
2.3.6. National Urban Development Policy	1 0
2.3.7 National Land Policy	1 1
2.4 Linkage of The Municipality of Embu IDeP with Other Plans	1 1
2.4.1. Vision 2030 and the Medium-Term Plans.....	1 1
2.4.2 National Spatial Plan	1 2
2.4.3 Embu County Integrated Development Plan.....	1 3
CHAPTER THREE:	1 4
INSTITUTIONAL FRAMEWORK	1 4
3.1 Introduction.....	1 4
3.2 Functions of the Municipality	1 4
3.3 Municipality of Embu Organizational structure	1 6
3.4. Stakeholders.....	1 6
3.4.1. County Executive	1 6
3.4.2 County Assembly	1 6
3.4.3 Residents.....	1 7
CHAPTER FOUR:	1 8
DEVELOPMENT PRIORITIES, PROGRAMMES AND PROJECTS.....	1 8
4.1. Introduction	1 8
4.2. Goals and Strategies	1 8
4.3. Priorities, Programs and Projects.....	1 9
CHAPTER FIVE:	2 3
IMPLEMENTATION, MONITORING & EVALUATION AND RESOURCE	
MOBILIZATION	2 3
5.1 Introduction	2 3
5.2 Implementation	2 3
5.3 Environment, Natural Resources and Climate Change	2 3
5.4 Climate Change Mitigation Measures and Adaption Strategies	2 4
5.5 Environmental Management System.....	2 5
5.6 Monitoring and Evaluation	3 0
5.5. Review.....	3 2
5.6 Resource Mobilization	3 5

LIST OF TABLES

Table 1.1: Municipality Electoral Wards 3

Table 4.1: Municipality Goal and Strategies 1 8

Table 4,2: Municipality Programs, Output, Indicators and Targets 2 0

Table 5.1 Monitoring & Evaluation Template..... 3 1

Table 5.2. Implementation, Monitoring and Evaluation framework 3 3

Table 5.3 Sources and Proportion of Funding 3 5

LIST OF FIGURES

Figure 1.1 Map of the County showing location of the Municipality 3
Figure 3.1 Municipality of Embu Organizational Structure 16

LIST OF ACRONYMS AND ABBREVIATIONS

CAE	County Assembly of Embu
CECM	County Executive Committee Member
CIDP	County Integrated Development Plan
GDP	Gross Domestic Product
GIS	Geographic Information Systems
IDeP	Integrated Development Plan
ISUDP	Integrated Strategic Urban Development Plan
KUSP	Kenya Urban Support Programme
LIHUD	Lands, Infrastructure, Housing and Urban Development
MDGs	Millennium Development Goals
NSP	National Spatial Plan
NUDP	National Urban Development Policy
PLUPA	Physical and Land Use Planning Act
SDGs	Sustainable Development Goals
UACA	Urban Areas and Cities Act
UHC	Universal Health Care

CHAPTER ONE: GENERAL INFORMATION

1.0 Introduction

Chapter one provides the general information of the municipality on the socio-economic status and infrastructural related development. It also provides detailed information on the municipality location, size, physiographic and natural conditions, demographic profiles as well as the administrative and political units.

1.1 Historical Background of Embu Municipality

Embu town is a major trading centre in Eastern Kenya. For a long time, it was the main economic center for the Embu, Mbeere and Kamba communities as well as other communities from central Kenya. Embu is the administrative headquarters of Embu County, a role which the town played for the former Eastern Province. The town, located on the foothills of Mount Kenya, was established in the late 1800s.

The presence of several institutions of higher learning has led to a significant boost of the town's real estate market, with an increased demand for housing and office space. Urban sprawl is a major challenge confronting urban planning in the town with Embu town being no exception to the myriad urban challenges facing urban areas in Kenya such as inadequate infrastructure and housing, land-use planning challenges, inadequate urban planning, and urban poverty. Despite the challenges, the town remains a key centre for productivity growth in the county and the region.

1.2 Integrated Development Plan (IDeP)

1.2.1 Purpose

This Municipal Integrated Development Plan is the second to be formulated by the Municipal Board in order to actualize the provisions of the Constitution 2010, Urban Areas and Cities Act, 2011, amended 2012 and 2019 and the Public Finance Management Act, 2012. It also seeks to provide the basis which will guide the execution of the priority projects and programs within Embu Municipality.

1.2.2 Objectives

- A. Promote shared economic growth and job creation.
- B. Enhance good governance and active citizenry.
- C. Enhance basic infrastructure for effective service delivery.

1.2.3 Specific Objectives

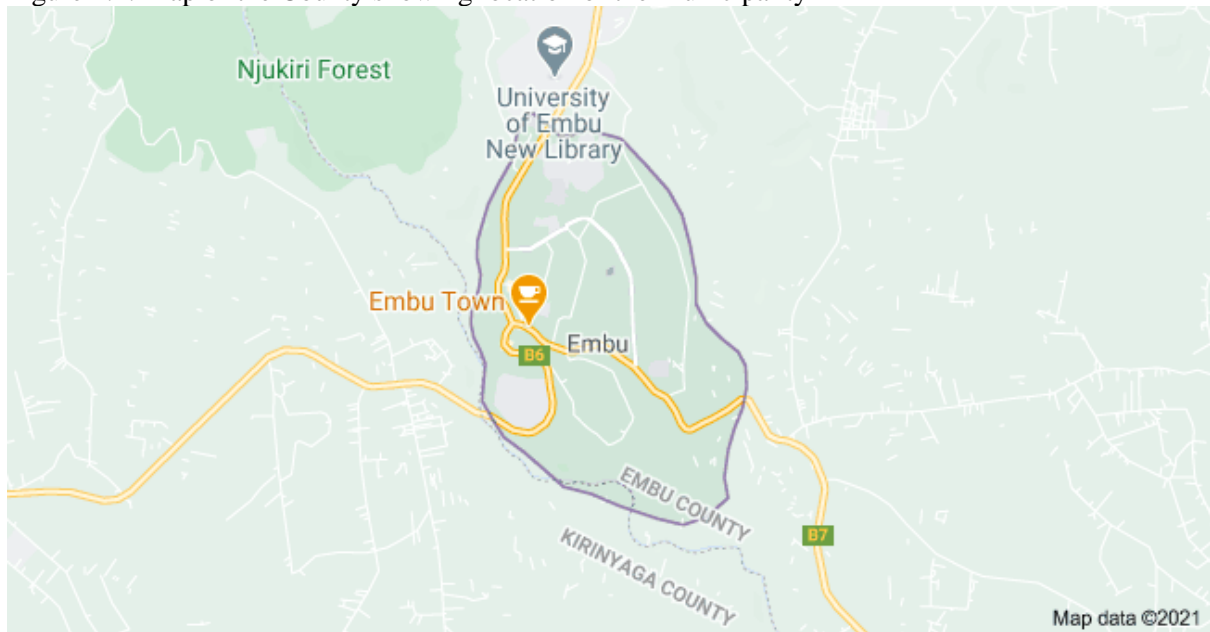
- a) An assessment of the current social, cultural, economic and environmental situation in the area of jurisdiction.
- b) Determination of community needs and aligning them to the requirements of the constitution.
- c) Prioritization of the identified needs in order of urgency and long-term importance'
- d) Protection and promotion of the interests and rights of minorities and marginalized groups and communities

1.3 Location

1.3.1 Position and Size of the Municipality

The Municipality lies on an area of approximately 102 Square kms and with a radius of about approximate 10 km (6 miles) in size.

Figure 1.1: Map of the County showing location of the Municipality



1.3.2 Administrative Units

Embu municipality hosts the Eastern regional and the Embu County headquarters, several parastatals and many service institutions. The County Government has two arms; County Executive and County Assembly of Embu, both of which have offices within the Municipality. Administratively Embu Municipality lies in parts of Embu West and Mbeere South Sub-Counties. More specifically it covers the whole of central location and part of Mbeti South location.

1.3.3 Political units

Embu Municipality is within Manyatta Constituency, covers the whole of Kirimari Ward and parts of Mbeti North and Mbeti South Wards.

Table 1 shows political units in the municipality.

Table 1.1: Municipality Electoral Wards

Constituency	Ward Names
Manyatta Constituency	Kirimari
	Mbeti North
	Nginda (part)
	Ruguru Ngandori (part)
	Kithimu (part)
Mbeere South	Mbeti South

Source: Independent Electoral and Boundaries Commission, 2010

1.4 Physiographic and Natural Conditions

1.5.1 Physical and Topographic Features

The Municipality of Embu has an elevation of 1,350 metres (4,429 ft.), and is located on the foothills of Mount Kenya. The area around the Municipality of Embu has a conducive altitude for endurance training by athletes. As such, Kenyan athletes use the altitude and climate advantage of Embu for training, with specialized facilities at Kigari Teachers' Training College which is approximately 15 km (9.3 miles) towards the North. The Municipality slopes from west to east, with the highest elevation at Njukiri. The CBD is within two permanent rivers; Rupingazi and Kapingazi rivers with Njukiri forest in the west.

1.5.2 Ecological and Climatic Conditions

Embu Municipality depicts two different agro-climatic and natural characteristics. The Municipality has a typical agro-ecological profile of the windward side of Mt. Kenya, from cold and wet upper zones to hot and dry lower zones. The average annual rainfall ranges from approximately 600mm to 2200 mm.

The rainfall pattern is bi-modal with two distinct rainy seasons. The long rains occur between March and June while the short rains fall between October and December. Temperatures range from a minimum of 12°C in July to a maximum of 30°C in March with a mean average of 21°C. July is usually the coldest month with an average monthly temperature of 15°C while September is the warmest month with an average monthly temperature rising to 27° C.

1.6 Demographic Features

Demographic characteristics are important in development planning as they provide a basis for sharing the limited resources. They also determine the size of labor force as well as the expected utilization of social amenities. Informed consideration of demographic characteristics enables sound decision making in the provision of essential services in urban areas.

1.6.1 Urban Population

The 2019 Census reported Embu urban centre had a core-urban population of 35,736 people; a peri-urban population of 24,937 people; and a total population as 60,673 people. The economy of the town is similar to that of other urban areas in central Kenya, with the agricultural economy of the hinterland strongly linked to the town's economy. Other sectors include

commerce, financial services, and the informal economy.

Embu town being the Municipality urban area accounts for the largest proportion of urban population in Embu county with a population of 64,979 people which stands at 59.43%.

The town is a major economic hub and transit town to northern frontier hence houses many people. It has a large juakali sector that attracts many persons from the rural areas and adjacent counties

CHAPTER TWO:

LEGAL AND POLICY FRAMEWORK AND IDEP LINKAGES

2.1 Policy and Legal Framework

This section analyses some of the relevant policies, legislation and institutions geared towards urban development. It entails looking at the local, national and international regulations and policies that form the basis of urbanization.

2.2. International and Regional Conventions

2.2.1 Sustainable Development Goals

Sustainable Development Goals (SDG) are also known as the Global Goals. The SDGs were adopted by the United Nations in the year 2015 as a universal call to action in order to end poverty, protect the planet and ensure that by 2030 all people will enjoy peace and prosperity. Among the 17 SDGs adopted, goal 11 entails Sustainable Cities and Communities. The goal also aims to renew and plan cities (urban areas) and other human settlements in a way that offers opportunities for all with access to basic services, energy, housing, transportation and green public spaces while reducing resource use and environmental impact.

11.1 By 2030, ensure access for all to adequate, safe and affordable housing and basic services and upgrade slums

11.2 By 2030, provide access to safe, affordable, accessible and sustainable transport systems for all, improving road safety, notably by expanding public transport, with special attention to the needs of those in vulnerable situations, women, children, persons with disabilities and older persons

11.3 By 2030, enhance inclusive and sustainable urbanization and capacity for participatory, integrated and sustainable human settlement planning and management in all countries

11.4 Strengthen efforts to protect and safeguard the world's cultural and natural heritage

11.5 By 2030, significantly reduce the number of deaths and the number of people affected and substantially decrease the direct economic losses relative to global gross domestic product caused by disasters, including water-related disasters, with a focus on protecting the poor and people in vulnerable situations

11.6 By 2030, reduce the adverse per capita environmental impact of cities, including by paying special attention to air quality and municipal and other waste management

11.7 By 2030, provide universal access to safe, inclusive and accessible, green and public spaces, in particular for women and children, older persons and persons with disabilities

11.A Support positive economic, social and environmental links between urban, peri-urban and rural areas by strengthening national and regional development planning

11.B By 2020, substantially increase the number of cities and human settlements adopting and implementing integrated policies and plans towards inclusion, resource efficiency, mitigation and adaptation to climate change, resilience to disasters, and develop and implement, in line with the Sendai Framework for Disaster Risk Reduction 2015-2030, holistic disaster risk management at all levels

11.C Support least developed countries, including through financial and technical assistance, in building sustainable and resilient buildings utilizing local materials

More specifically, these SDGs endeavor;

- i. To end poverty in all its forms,
- ii. Achieve food security,
- iii. Improve nutrition and promote sustainable agriculture.
- iv. Ensure healthy lives and promote well-being for all at all ages.
- v. Ensure inclusive and equitable quality education and promote lifelong learning opportunities for all.
- vi. Achieve gender equality and empower all women and girls.
- vii. Ensure availability and sustainable management of water and sanitation for all.
- viii. Ensure access to affordable, reliable, sustainable and modern energy for all
- ix. Promote sustained, inclusive and sustainable economic growth, full and productive employment and decent work for all
- x. Build resilient infrastructure.
- xi. Promote inclusive and sustainable industrialization and foster innovation.
- xii. Reduce inequality within and among countries.

- xiii. Make cities and human settlements inclusive, safe, resilient and sustainable.
- xiv. Ensure sustainable consumption and production patterns.
- xv. Take urgent action to combat climate change and its impacts.
- xvi. Conserve and sustainably use the oceans, seas and marine resources for sustainable development.
- xvii. Protect, restore and promote sustainable use of terrestrial ecosystems, sustainably manage forests, combat desertification, and halt and reverse land degradation and halt biodiversity loss.
- xviii. Promote peaceful and inclusive societies for sustainable development.
- xix. Provide access to justice for all and build effective, accountable and inclusive institutions at all levels, and strengthen & revitalize the means of implementation

This SDG 11 serves as the core pillar for this Integrated Development Plan. The investment projects and programs will be selected with a priority criterion that endeavor to achieve the SDG11 targets.

2.2.2. New Urban Agenda

This is an urbanization action blueprint for UN-Habitat and partners in support of the 2030 Agenda on Sustainable Development; especially SDG 11 - making cities inclusive, safe, resilient and sustainable. The blue print is anchored on five major pillars including National Urban Policies, Urban Legislation and regulations, Urban Planning and Design, Local Economy and Municipal Finance and Local Implementation. The Municipality of Embu Integrated Development Plan (2023-2027) is aligned to the New Urban Agenda through implementation of projects that aim at achieving this objective.

2.3 National Legal Framework

2.3.1. Constitution of Kenya 2010

The Constitution of Kenya is the supreme law of the country and provides the basis for planning. Further the Constitution of Kenya 2010 (Article 184) provides the overall principles of classification and management of urban areas, including citizens' participation. It provides for enactment of national legislation to give effect to the same which was established through the Urban Areas and Cities Act of 2011 amended in 2019.

2.3.2. County Government Act 2012

This act of parliament gives effect to chapter 11 of the Constitution of Kenya 2010. Section 5 (1) of the Act states that a county government shall be responsible for any function assigned to it under the Constitution or by an Act of Parliament.

Section 37 gives power to the county executive committee to monitor the process of planning, formulation and adoption of the integrated development plan by a municipality within the county, assist a municipality with the planning, formulation, adoption and review of its integrated development plan, facilitate the coordination and alignment of integrated development plans of different cities or municipalities within the county and within the plans, strategies and programs of national and county governments and take appropriate steps to resolve any disputes or difference in connection with the planning, formulation, adoption or review of an integrated development plan. More fundamentally the Act obligates county government to designate county departments, cities, municipalities, towns etc. as planning authorities of the county

2.3.3. Urban Areas and Cities Act

The *Urban Areas and Cities Act* (UACA, 2011 as amended, 2012, 2019) gives effect to Article 184 of the Constitution. The Act states that the management of cities and municipalities is vested in the County Government, but shall be administered, on its behalf, by a Board appointed by the Governor. The Board oversees the operations by an Urban Manager and staff as determined by the County Public Service Board.

Section 36 of the Act obligates every city and municipality to operate within the framework of integrated development planning which shall:

- i. Embrace development of urban areas and cities.
- ii. Strive to achieve the objects of devolved government as set out in article 174 of the Constitution.
- iii. Contribute to the protection and promotion of the fundamental rights and freedoms contained in Chapter Four of the Constitution and the progressive realization of the socio-economic rights.

Embu Municipality integrated development framework provides the basis for the preparation of Environmental management plans, the preparation of valuation rolls for property

taxation, provision of physical and social infrastructure and transportation, preparation of annual strategic plans for Municipality, disaster preparedness and response, overall delivery of service including provision of water, electricity, public health, and solid waste management and the preparation of a geographic information system for the municipality. Further, the integrated development framework nurtures and promotes development of formal commercial activities in an orderly and sustainable manner, provides a framework for regulated urban agriculture and be the basis for development control.

2.3.4 Physical and Land Use Planning Act 2019

The Physical and Land Use Planning Act (PLUPA) No.13 of 2019 provides for planning, use, regulation and development of land for connected purposes. The Act establishes physical and land use planning institutions, categorizes types of physical and land use development plans, development control, enforcement, physical and land use planning liaison committees.

Embu Municipality Integrated Development plan considers the Acts interventions such as development of physical and land use plans for the municipality, development of municipal by laws to aid in development control, enforcement of the physical and land use plans as well as resolution of planning and land use disputes.

2.3.5. Environmental Management and Coordination Act of 1999

The Act provides for the establishment of an appropriate legal and institutional framework for the management of the environment. It aims at promoting a safe, clean and healthy environment. Section 58 of the Act requires that every development project likely to have impacts on the environment to undergo an environmental impact assessment before commencement of any works. All development projects proposed under the Municipality of Embu Integrated Development Plan shall undergo screening and Social & Environmental Impact Assessment.

2.3.6. National Urban Development Policy

The National Urban Development Policy (NUDP) provides the blue print for urban development in Kenya with an overall objective of providing a framework for sustainable urban development in Kenya for the benefit of all. The policy looks at urban governance as means in which individuals and institutions, public and private, plan and manage the common affairs of

urban areas. More specifically the policy aims at creating a framework for sustainable urbanization by presenting three sets of policy interventions on urban management;

- i. Urban core issues and additional areas of advice; which entails urban planning, land, infrastructure and climate change, infrastructure, housing and disaster and risk management.
- ii. Urban Management which entails urban governance, finance and economy.
- iii. Urban Advisory which deals with social issues, marginalized groups, cross-cutting principles and introduces an implementation matrix.

The policy interventions proposed in the National Urban Development Policy are properly enshrined in this integrated development plan for the Municipality of Embu.

2.3.7 National Land Policy

The National Land Policy advocates;

- i. Optimal utilization of Land (Compact development).
- ii. Recognition and provision for informal sector activities.
- iii. Promotion of mixed-use development and provision for coordinated framework for Enforcing Planning Decisions.

Embu Municipality Integrated Development Plan provides the basis for the spatial development framework for Municipality of Embu and as such takes due cognizance of the above principles highlighted in the National land policy.

2.4 Linkage of The Municipality of Embu IDeP with Other Plans

2.4.1. Vision 2030 and the Medium-Term Plans

The Kenya Vision 2030 aims at transforming Kenya into a newly industrialized middle income country, providing a high quality of life to all its citizens by 2030 in a clean and secure environment. The Vision is anchored on three key pillars: Economic; Social; and Political.

The Kenya Vision 2030 is phased out to be implemented in successive five-year Medium-Term Plans. The first plan covered the period 2008-2012, the second one covered 2013-2017 while the third covered 2018-2022. The Country is currently implementing the fourth Medium Term Plan (2023 -2027) which builds upon the gains made and lessons learnt in implementing the preceding Medium Term Plans.

The MTP IV policies, programs aim at achieving aspirations of the five sectors that form the core pillars of the government Manifesto, SDGs, Africa's Agenda 2063 and other regional and international economic frameworks. It aims at revitalizing performance in all economic sectors in order to foster growth, employment creation, poverty reduction and ultimately improve livelihood of the economically disadvantaged groups.

The Municipality of Embu IDep covers the MTP IV period and hence well placed to achieve the goals of the National plan. The IDep, therefore encapsulates the intentions of the vision 2030 and more specifically the targets of the MTP IV. This will ultimately help the Municipality of Embu achieve SDG11 goal of making Embu Municipality, inclusive, safe, resilient and sustainable.

2.4.2 National Spatial Plan

The National Spatial Plan (NSP) is a premise upon which the County Spatial Plan and framework is anchored. The Municipality of Embu has mapped its development to the County Strategic Land Use Development Plan through its Strategic Land Use Plan that is derived from the County Spatial Plan.

Thus the Municipality of Embu IDeP aligns all its projects and programs with the Municipality Strategic Land Use Development Plan.

4.2.3 Bottom-Up Economic Transformation Agenda (BETA)

BETA focuses on empowering communities at the "bottom of the pyramid" by integrating them into urban growth through inclusive policies, prioritizing affordable housing, upgrading informal settlements, and providing essential services and green spaces, creating jobs and improving living standards. This leads to development of modern serviced neighborhoods, green jobs, ensuring climate action, and promotion of value chains like construction and digital economy.

BETA is premised on a spectrum of core principles, which include:

People-Centred Development, Affordable Housing, Inclusive Urban Renewal, Economic Empowerment, Value Chain Focus and Environmental Sustainability. The urban transformation actions include, Slum Upgrading, Catalytic Projects, Climate Action Integration and Digital & Green Infrastructure.

The Municipality of Embu IDeP integrates its development focus strategically with the BETA for better alignment with the national development agenda.

2.4.4 Embu County Integrated Development Plan

The Embu County Integrated Development Plan (CIDP) 2023-2027 seeks to transform Embu through Inclusive and Sustainable Development. The plan provides a platform to facilitate an integrated and coordinated approach to addressing the key development needs of the people of Embu. The Municipality of Embu IDeP is integrated in the Embu County CIDP to depict the holistic County Development.

CHAPTER THREE: INSTITUTIONAL FRAMEWORK

3.1 Introduction

The functions of the Municipality are derived from the County Governments Act 2012 and Urban Areas and Cities Act 2011 as amended in 2019 which are a realization of Article 184 of the Constitution, 2010. The institutional framework defines a relationship between the County Governments and the municipalities in the implementation of Municipal functions. This section highlights the implementation framework that will be adopted in implementing the Embu Municipal Integrated Development Plan (IDeP).

3.2 Functions of the Municipality

The functions of the Municipality are as derived from Section 20 of the Urban Areas and Cities Act 2011 as amended in 2019 and Section 2.3.1. of the Embu Municipal Charter. Based on those two legal instruments the municipality is obligated to undertake the following functions:

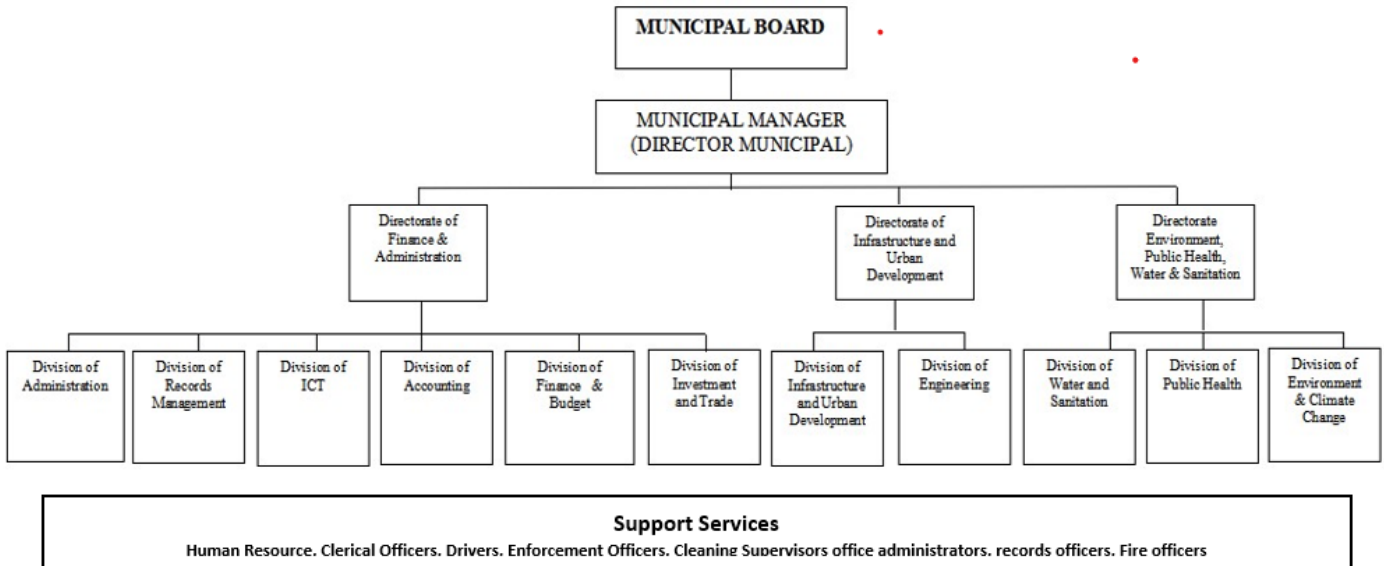
- a) Promotion, regulation and provision of an integrated wastes management system;
- b) Promotion and provision of water and sanitation services and infrastructure (in areas within the Municipality not served by the Water and Sanitation Provider);
- c) Construction and maintenance of urban roads and associated infrastructure;
- d) Construction and maintenance of storm drainage and flood controls;
- e) Construction and maintenance of walkways and other non-motorized transport infrastructure;
- f) Construction and maintenance of recreational parks and green spaces;
- g) Construction and maintenance of street lighting;
- h) Construction, maintenance and regulation of traffic controls and parking facilities;
- i) Construction and maintenance of bus and taxi stands, and boda-boda sheds;
- j) Regulation of outdoor advertising;
- k) Construction, maintenance and regulation of municipal markets and abattoirs;
- l) Construction and maintenance of fire stations; provision of fire-fighting services, emergency preparedness and disaster management;
- m) Promotion, regulation and provision of municipal sports and cultural activities;
- n) Promotion, regulation and provision of animal control and welfare;

- o) Development and enforcement of municipal plans and development control;
- p) Municipal administration services (including construction and maintenance of administrative offices);
- q) Promoting and undertaking infrastructural development and services within Municipality.

3.3 Municipality of Embu Organizational structure

The Municipality of Embu is managed by the Embu Municipal Board as enshrined in the Urban Areas and Cities Act. The day-to day operations of the Municipality are left to the officers led by the Municipal Manager. The figure below shows the administrative structure of the Municipality.

Figure 3.1 Municipality of Embu Organizational Structure



3.4. Stakeholders

3.4.1. County Executive

The executive authority of the county is vested in and exercised by the County Executive Committee. The Executive comprises of the Governor as the chairperson, Deputy Governor, County Secretary and ten County Executive Committee members (CECM) appointed by the Governor with the approval of The County Assembly (CA).

3.4.2 County Assembly

The County Assembly is the legislative arm of the County Government. It is composed of the Members of County Assembly (MCAs) both elected and nominated, the Speaker and the Clerk as an ex-Official. The functions of the County Assembly includes: Vetting and approving nominees for appointment to County public offices; Approving the budget and expenditure of the County government in accordance with Article 207 of the Constitution, and the legislation contemplated in Article 220 (2) of the Constitution, guided by Articles 201 and 203 of the Constitution; approve the borrowing by the County government in accordance with Article 212 of the Constitution; Approve County development planning; and perform any other role as may be set out under the Constitution or legislation. The County assembly also receives and approves development plans, policies, financial bill, and enact county appropriations, approve budget estimates and county government borrowing.

3.4.3 Residents

Municipality of Embu is cosmopolitan with Embu, Mbeere, Kamba and Kikuyu being the majority. The residents are engaged in development issues and services delivery through stakeholders' engagement fora that are held on quarterly basis. The Municipality of Embu IDep prioritizes projects and programs as guided by the residents' opinion.

**CHAPTER FOUR:
DEVELOPMENT PRIORITIES, PROGRAMMES AND PROJECTS**

4.1. Introduction

The Municipality of Embu IDep enumerates the development priorities, programs and project as depicted below.

4.2. Goals and Strategies

The Municipality aspires to provide high quality services, harness opportunities and promote sustainable development through several strategies as described below.

Table 4.1: Municipality Goal and Strategies

GOAL	STRATEGIES
To provide high quality services, harness opportunities and promote sustainable development in Embu Municipality.	<ol style="list-style-type: none"> 1. Formulate & implement legislations to operationalize UACA, 2012. 2. To control the use and development of land 3. Consider and approve all development applications. 4. Formulate by laws to regulate zoning in respect of use and density of use. 5. prepare execute and implement approved physical development plans. 6. Street lighting and lighting of public areas 7. Establish and maintain recreational grounds and open spaces. 8. Establish, maintain let and manage public markets and buildings. 9. Establish, maintain camping, and outspan grounds. 10. Establish and maintain public monument. 11. Enforce municipality by laws. 12. Waste collection transportation disposal and management 13. Town greening and beautification 14. Advertise and give publicity t the attractions and advantages on the area of municipality. 15. Prohibit obstruction in or on public places and provide for the removal and sale of such obstruction. 16. Charge fees for licenses and permits issued in respect of any person or matter, premises, or trade, whom or which the municipality is empowered to control. 17. Impose fees or charge of any service provided or goods or documents supplied by the municipality or any of its officers in pursuance of or in connection with the discharge of any duty or power of municipality.

4.3. Priorities, Programs and Projects

In order for the Municipality to achieve its goals and strategic objectives various programs need to be carried out. Key deliverables are pre-determined and evaluated using set key performance indicators. The programs, key output, performance indicators and targets are presented in table 4.2

Table 4.2: Municipality Programs, Output, Indicators and Targets

Objective: To provide high quality services, harness opportunities and promote sustainable development in Embu Municipality														
Outcome: Operationalize the Municipality of Embu														
Programme	Key Output	Key performance Indicators	Linkages to SDG Target	Planned Targets and indicative targets (KESs in M)										Total Budget
				Year 1		Year 2		Year 3		Year 4		Year 5		
				Target	Cost	Target	Cost	Target	Cost	Target	Cost	Target	Cost	
Implement legislations to operationalize UACA, 2011	Transfer of functions to the municipality	No of functions transferred	SDG	7	15	6	10	6	5	-	-	-	-	30
Review the existing and implementation of the Embu ISUDP and action area plans	A revised ISUDP and action plans	No off. ISUDPs		1 (revised ISUDP)	10	2 (action area plans)	10	2(action area plans)	10	-	-	-	-	30
Street lighting and lighting of public areas (Solarized)	Well-lit streets and public areas	No of streetlights installed. No masts mounted		3 streets 5 masts	5	3 streets 5 masts	5	3 streets 5 masts	5	3 streets 5 masts	5	3 streets 5 masts	5	25
Establish and maintain recreational grounds and open spaces (With Greening and Beautification)	Established recreational grounds and open spaces.	No of recreational grounds and open spaces.		1 Recreational ground	120	2 Open spaces	20	2 opens. Spaces	20	2 opens. Spaces	20	2 open s. Spaces	20	200
Establish, maintain let, and manage public markets and buildings	Established and managed public	No of Established and managed	SDG 11. b			1	50			1	50			100

	markets and buildings	public markets and buildings												
Establish and maintain camping and outspan grounds	Established camping ground.	No of Established camping ground.	SDG 11. b	1 camping ground (part)	100	1 camping ground (part)	100	1 camping ground (part)	50	1 camping ground (part)	-	-	-	250
Establish and maintain public monument	Established and maintained public monuments	No of Established and maintained public monuments-	SDG 11. b			1 monument	5	1 monument	5	1 monument	5	-	-	15
Enforce municipality by laws	Developed municipality by laws	Approved by laws	SDG 11. b	1	10									10
Waste collection transportation disposal and management	A well-organized Waste collection transportation disposal and management system.	No of Waste bins located in strategic places.	SDG 6.2	200(waste bins)	2	100(waste bin)	1	100(waste bins)	1	100(waste bins)	1	-	-	5
		No of Transfer stations				5	2.5	5	2.5	5	2.5	5	2.5	10
		No of well-maintained transportat				1 truck	20	1 truck	20	1 truck	20	-	-	

		ion vehicles 1 Operational vehicle		1 (Double-Cab)	5									65
Advertise and give publicity to the attractions and advantages on the area of municipality	Well-developed and municipal website	No of municipal website				1 Website	5	1 Website	5	1 Website	5	1 Website	5	20
Development Partners' Counter Funding	Partners secured	Number of partners acquired		1 development partner	5	1 development partner	5	1 development partner	5	1 development partner	5	1 development partner	5	25
Enhance Capacity of critical staff	Deployed staff/Employed	No. of staff deployed to the municipality	SDG 11.b	As per the functions transferred to the municipality		As per the functions transferred to the municipality		As per the functions transferred to the municipality		As per the functions transferred to the municipality		As per the functions transferred to the municipality	4	4
Public Toilets	Clean and neat public places	No. of IKO Toilets done	SDG 7	1	5	1	5	1	5	1	5	1	5	25
Development of Urban Infrastructure	Organised urban areas and centres	No. of Streets upgraded, Parking lots, Bus-parks	SDG 11.b	2	100	2	100	2	100	2	100	2	100	500

**CHAPTER FIVE:
IMPLEMENTATION, MONITORING & EVALUATION AND RESOURCE
MOBILIZATION**

5.1 Introduction

The IDeP is implemented in five years through Annual Investment Plans that shall be guided by formative and annual summative evaluations. The IDeP prescribes a M& E template. Monitoring of the Municipality IDeP shall be a continuous process through regular and organized reporting of achievements against the set performance indicators. A database of reports shall be compiled and shared regularly with all stakeholders. Challenges to implementation shall be documented and relevant action plans developed to correct the gaps and scale up the implementation.

5.2 Implementation

The IDeP activities and projects shall be implemented as guided by the stakeholder's priorities and availability of resources. The Municipality targets to receive County Budget allocations for developments as well as Development donor funding.

5.3 Environment, Natural Resources and Climate Change

Situational Analysis of the Municipality of Embu Environmental and Natural Resources For decades, Embu Municipality has had a conducive environment for living and working. In the recent experienced growth both development and population and especially due to the increased businesses and learning institutions, the pressure exerted on the environment have been noted as a big challenge to the mother nature. This has led to extinction of wetlands and soil erosion hence reduced productivity. The other causes are inadequate solid and liquid waste management facilities particularly in the urban and peri-urban areas. This has led to blockage of drainage systems in urban centers causing flooding, destruction of property and outbreak of health-related disease like cholera.

The municipal board in collaboration with relevant stakeholders, will ensure measures are put in place to reclaim the riparian areas and plant indigenous trees to protect further soil erosion. The following areas are very much degraded due to unsustainable quarrying and this is posing a great danger to the environment.

Area	Ward	Remarks
Grogon	Kirimari	Very steep grounds and no forest or grass cover Slum area and so unsustainable waste management
Shauri	Kirimari	Informal houses and no waste management strategies Open sewers
Rupingazi river banks	Kirimari and Mbeti North	Very steep grounds and no forest or grass cover. Farmers encroaching and destroying the riparian areas Crude solid waste dumping
Karurina and Kithimu	Mbeti North	Quarrying

5.4 Climate Change Mitigation Measures and Adaption Strategies

Climate change mitigation measures include; conservation of existing natural forests, planting of trees to increase forest and tree cover which act as carbon sink and adopting green economy and sustainable management of solid waste. In collaboration with Kenya Forest Services, the municipal board will embark in rehabilitating the dilapidated areas within the Municipality of Embu.

Challenge	Location	Objective	Strategies	Actors
Environmental sensitive areas.	Municipality.	To identify environmental sensitive areas.	Assess and profile environmentally sensitive areas and undertake mitigation measures.	Embu Municipal Board.
Climate change	Municipality.	To mitigate against climate change effects.	Preparation of the participatory forest/hills management plan. Sensitization of the farmers and business people to adopt climate friendly practices. Establishment of climate change education system to developers and residents Having trees planting day for demonstration and public sensitization.	Embu Municipal Board. Kenya Forest Service. Community members.
ack of public awareness and sensitization on importance of environmental protection	Municipality.	To sensitize and create awareness on the importance of environment and climate sustainability.	Holding public baraza to sensitize and educate the people. Holding workshops and meeting to educate people about measures to curb environmental pollution. Creating municipality cleaning day for all the residents.	Embu Municipal Board. Community members.

Challenge	Location	Objective	Strategies	Actors
Lack of environmental management plan.	Municipality.	To conserve the environment.	Preparation of the environmental management plan.	Embu Municipal Board.
Lack of energy security and use of no-renewable sources of energy.	Municipality.	To enhance energy security through distributed renewable energy systems.	Innovations of new technologies for green economy and risk resilience.	Embu Municipal Board.
Increased encroachment of the riparian reserve.	Kathita, Shauri and Kapingazi	To reduce the level of the encroachment of the swamps.	Create the 15m buffer for the swamps Sensitization to the residents on the importance of the conservation of the swamps.	Embu Municipal Board.

5.5 Climate Risk Profile

This Rapid Climate Risk Assessment (RCRA) for Embu Municipality evaluates current and future climate hazards, exposure, vulnerability, and risks to urban systems, populations, and natural assets. The objective is to inform climate-resilient urban planning and investment decisions.

Objective(s) of the rapid climate risk assessment,

This Urban Climate Risk Profile aims to:

- To guide development of policies and strategies that address current and future climate risks at the municipality level.
 - To inform development controls standards for sustainable development.
 - To guide development plans by adoption of programs and projects that integrate resilience measures.
 - To facilitate planning and implementation of climate resilient infrastructure that withstand current and future climate impacts and minimizes climate risks for citizens.
- **List of key hazards identified,**
 - Pluvial (surface level) flooding, including flash flooding and urban flooding
 - Fluvial (river) flooding
 - Drought (meteorological, hydrological)
 - Gully erosion
 - Changes in precipitation patterns
 - Average surface temperature increase

The climate risk assessment for the Municipality of Embu identifies pluvial flooding, fluvial flooding, and drought as the key climate hazards affecting the urban area, with pluvial flooding emerging as the most significant long-term risk.

While most hazards currently present low risk levels, future projections, particularly toward 2100, indicate increasing risks for stormwater drainage systems, solid waste management infrastructure, and informal settlement residents, especially under pluvial flooding scenarios. Informal settlements such as Grogon, Kathangari, and Shauri Moyo are disproportionately affected due to inadequate drainage, poor housing conditions, and limited access to basic services.

Drought poses persistent medium-level risks to water and wastewater management systems and urban green infrastructure, with implications for water security and ecosystem health. Overall, the findings highlight the need for proactive, climate-resilient planning, strengthened infrastructure maintenance, and targeted interventions for vulnerable populations to prevent escalation of future climate risks.

Recommended Solutions			
Category	Immediate	Mid-term	Long-term
Infrastructure & Services			
Stormwater Drainage	<ul style="list-style-type: none"> • The Municipality to develop a long-term storm water drainage plan that promotes climate resilience for design and construction • The Municipality department of Infrastructure to perform routine maintenance of the existing storm water drainage system • Redesigning the existing storm water drainage infrastructure to increase adequacy • Integrating storm water management into land use planning to control new development impacts 	<ul style="list-style-type: none"> • The Municipality to implement the storm water drainage plan • The Municipality to develop climate-sensitive operation and maintenance guidelines for infrastructures and services • Restoration and conservation of wetlands through nature-based solutions • Securing stable resources through various mechanisms (e.g. fees, grants, taxes) for long-term maintenance and upgrades. 	<ul style="list-style-type: none"> • The Municipality to develop emergency response plans for extreme weather events in collaboration with the department of Disaster management • Securing stable resources through various mechanisms (e.g. fees, grants, taxes) for maintenance and upgrades. • Systematically tracking and maintaining drainage infrastructure (pipes, inlets and outfalls)

<p>Solid Waste Management</p>	<ul style="list-style-type: none"> • The Municipality Solid Waste Department will increase frequency of waste collection in flood-prone hotspots to prevent drains from clogging. • The Municipal Environment Department will conduct public awareness campaigns on safe waste disposal, especially targeting informal settlements, where waste dumping blocks drainage. • Development of a municipal solid waste management plan 	<ul style="list-style-type: none"> • The Municipality Solid Waste Department will establish waste transfer stations and ensure they are flood-proof and accessible during heavy rains. • The Municipal Infrastructure, Survey and Physical Planning Department will integrate waste transport routes into climate-resilient road planning to avoid disruptions during floods. • Securing stable resources through various mechanisms (e.g. fees, grants, taxes) for long-term interventions. • Building local capacity (Municipal staff and informal waste pickers) to adapt and manage climate risks within the waste sector 	<ul style="list-style-type: none"> • The Municipality, in coordination with County Government, will transition open dumpsites into engineered sanitary landfills with leachate and gas management systems to withstand climate extremes. • The Municipality and NEMA will develop circular economy programs (e.g., material recovery facilities, waste-to-energy, recycling hubs) to reduce waste volumes and minimize vulnerability to climate impacts. • The Municipal Environment Department to integrate green buffers around disposal sites to reduce flooding.
-------------------------------	--	---	---

Populations			
<p>Informal Settlement Residents</p>	<ul style="list-style-type: none"> • The Municipality to disseminate early flood warning through locally effective channels such as radio and local leaders • Use of sand bags, barriers and digging of trenches to divert storm water away from household entrances • Retrofitting and elevating foundations or floor levels 	<ul style="list-style-type: none"> • Upgrading and expanding drainage networks within the informal settlements using concrete, stone-pitching or stabilized earth. • Improving housing structure for flood resilience • Setting up of evacuation centers for flood-prone hotspots • Formalizing waste management by creating designated waste points to avoid blockages 	<ul style="list-style-type: none"> • Construction of permanent stormwater drainage systems • Phasing out of informal settlements in flood-prone hotspots

5.6 Environmental Management System

In the Municipality, the management will ensure that all proposed development adhere to all regulations it touches across. Projects will be implemented in adherence to Section 58 of the EMCA, 1999 which requires that every development project likely to have negative impacts on the environment to undergo an Environmental and Social Impact Assessment (ESIA) and licensed issued before commencement of any works. The projects must address emerging issues like climate change and provide alternative for project with less damages to the environments. This will involve assessing, managing and monitoring environmental and social risks and impacts associated with each stage of the project, in order to achieve environmental and social outcomes consistent with the World Bank Environmental and Social Standards (ESSs). The projects must also adhere to the Occupational Safety and Health (OSH) 2007 Act.

5.6 Monitoring and Evaluation

Regular evaluations shall be undertaken throughout the IDeP period with respect to the Annual Investment Plans. This will enable the leadership of the Municipality to take corrective action where necessary and ensure public accountability. Evaluation will be founded on the examination of performance contracts and departmental work plans. Key indicators during both monitoring and evaluation shall be to determine whether;

- i) Goals and objectives are achieved;
- ii) Timelines in the implementation of proposed activities are being met;
- iii) There is need to adjust timelines;
- iv) Personnel and infrastructure are available to meet the integrated plan requirements;
- v) The resource base is adequate to achieve the set plans
- vi) The sector priorities require revision

Table 5.1 Monitoring & Evaluation Template

Name of Evaluator: _____

Designation: _____

Institution: _____

Nature of Evaluation: (Formative ___/ Summative ___)

Date of Evaluation: _____

Task description	Start Date	Completion Date	Performance Indicators	Percentage Progress	Comments
Transfer of functions to the municipality			No of functions transferred		
A revised ISUDP and action plans			No off. ISUDPs		
Well-lit streets and public areas			No of streetlights installed. No of masts mounted		
Established recreational grounds and open spaces.			No of recreational grounds and open spaces.		
Established and managed public markets and buildings			No of Established and managed public markets and buildings		
Established camping ground.			No of Established camping ground.		
Established and maintained public monuments			No of Established and maintained public monuments-		
Developed municipality by laws			Approved by laws		
A well-organized Waste collection transportation disposal and management system.			No of Waste bins located in strategic places.		
			No of Transfer stations		
			No of well-maintained transportation vehicles 1 Operational vehicle		
Well-developed and municipal website			No of municipal website		
Partners secured			Number of partners acquired		
Deployed staff/Employed			No. of staff deployed to the municipality SDG 11.b		
Clean and neat public places			No. of IKO Toilets done SDG 7		
Organized urban areas and centres			No. of Streets upgraded, Parking lots, Bus-parks SDG 11. b		

General Comments/ Recommendations by the Evaluator:

5.5. Review

The Integrated plan will be reviewed annually through the annual strategic planning process as envisaged in the urban areas and cities act 2011 amended 2012, 2019, taking stock of changes in the internal and external environments. The process will be aimed at identifying opportunities for improvement and challenges with an ultimate goal to inform strategic direction and budget formulation in the course of implementation of the plan. The review will be based on evidence and data collected during implementation.

Table 5.2. Implementation, Monitoring and Evaluation framework

Objective: To provide high quality services, harness opportunities and promote sustainable development in Embu Municipality							
Outcome: Operationalize the Municipality of Embu							
Key Output	Key performance Indicators	Implementation Period					Total Budget KES (Millions)
		2023/2024	2024/2025	2025/2026	2026/2027	2027/2028	
		Target	Target	Target	Target	Target	
Transfer of functions to the municipality	No of functions transferred	7	6	6			30
A revised ISUDP and action plans	No off. ISUDPs	1 (revised ISUDP)	2 (action area plans)	2(action area plans)			30
Well-lit streets and public areas	No of streetlights installed. No of masts mounted	3 streets 5 masts	3 streets 5 masts	3 streets 5 masts	3 streets 5 masts	3 streets 5 masts	25
Established recreational grounds and open spaces.	No of recreational grounds and open spaces.	1 Recreational ground	2 Open spaces	2 opens. Spaces	2 opens. Spaces	2 opens. Spaces	200
Established and managed public markets and buildings	No of Established and managed public markets and buildings		1		1		100
Established camping ground.	No of Established camping ground.	1 camping ground (part)	1 camping ground (part)	1 camping ground (part)	1 camping ground (part)		250
Established and maintained public monuments	No of Established and maintained public monuments-		1 monument	1 monument	1 monument		15
Developed municipality by laws	Approved by laws	1					10
A well-organized Waste collection transportation disposal and management system.	No of Waste bins located in strategic places.	200 waste bins	100 waste bin	100 waste bins	100 waste bins		5
	No of Transfer stations		5	5	5	5	10
	No of well-maintained transportation vehicles 1 Operational vehicle	1 (Double-Cab	1 truck	1 truck	1 truck		65

Well-developed and municipal website	No of municipal website		1 Website	1 Website	1 Website	1 Website	20
Partners secured	Number of partners acquired	1 development partner	1 development partner	1 development partner	1 development partner	1 development partner	25
Deployed staff/Employed	No. of staff deployed to the municipality SDG 11.b	As per the functions transferred to the municipality	As per the functions transferred to the municipality	As per the functions transferred to the municipality	As per the functions transferred to the municipality	As per the functions transferred to the municipality	4
Clean and neat public places	No. of IKO Toilets done SDG 7	1	1	1	1	1	25
Organized urban areas and centres	No. of Roads upgraded, Streets upgraded, Parking lots, Bus-parks SDG 11. b	2	2	2	2	2	500

5.6 Resource Mobilization

The Municipality shall mobilize funds to carry out the planned activities from the County Government Allocation, Donor funding and Donations. The funding is as described in the table 5.2 below:

Table 5.3 Sources and Proportion of Funding

Source of Funds	Amount (KES. Millions)				
	2023/2024	2024/2025	2025/2026	2026/2027	2027/2028
County Budget allocations	94.25	84.625	58.375	54.625	36.625
Development donor funding & Donations	282.75	253.875	175.125	163.875	109.875
Total	377	338.5	233.5	218.5	146.5

MINUTES OF THE FOURTH QUARTER 2023/2024 EMBU MUNICIPAL BOARD MEETING HELD ON FRIDAY 31ST MAY 2024 AT 10.30AM IN THE MUNICIPALITY BOARDROOM.

MEMBERS PRESENT

- | | |
|------------------------|-----------------------------------|
| 1. Dr Esther Nthiga | Chairperson |
| 2. Mr. Benjamin Mugo | Vice Chair |
| 3. Ms Susan Kaguongo | Member |
| 4. Mr. Simon Muriuki | Member |
| 5. Ms. Grace Murugi | Member |
| 6. Mr. Joseph Ndwigah | Member |
| 7. Mr. Bernard Nthiga | Member |
| 8. Ms. Catherine Nyaga | Municipal Manager/Board Secretary |
| 9. Mr. John Mucira | Deputy Director Administration |

APOLOGY

- | | |
|-------------------------|------------------------|
| 1. Mr. Raymond Kinyua | CECM-Urban Development |
| 2. Ms. Emily Njeru | Member |
| 3. Mr. Benjamin Mutisya | CO Urban Development |

AGENDA

1. Preliminaries
2. Reading of notice and adoption of agenda
3. Reading and confirmation of previous minutes
4. Matters arising
5. Adoption of the Fourth Quarter 2023/2024 Public Forum Minutes
6. Committee Reports
7. Annual Solid Waste Management Monitoring Policy and Plan FY 2024/2025
8. Transferred functions
9. KUSP 2 UDG allocation
10. Tabling and Adoption of the Board's End of Term Report
11. Proposed Schedule of activities for the year 2024-2025
12. Review of IDeP

MIN: MOE/BOARD/MEETING/44/2023/2024 ANNUAL SOLID WASTE MANAGEMENT MONITORING POLICY AND PLAN FY 2024/2025

The Board was taken through the Annual Solid Waste Management Monitoring Policy and Plan for FY 2024/2025. The members unanimously approved the Annual SWM monitoring policy and the plan.

MIN: MOE/BOARD/MEETING/45/2023/2024 END OF TERM REPORT

The Board had prepared its End Term Report and was being compiled and edited by the secretariat. A final draft was presented to the Board and was adopted unanimously as proposed by Joseph Ndwiga and seconded by Bernard Nthiga.

MIN: MOE/BOARD/MEETING/46/2023/2024: PROPOSED SCHEDULE OF ACTIVITIES FO YEAR 2024-2025

The meeting being the last Board meeting for the year 2023/2024, a draft proposal for the schedule of activities for the year 2024-2025 was presented. The members unanimously adopted the schedule.

MIN: MOE/BOARD/MEETING/47/2023/2024: REVIEW OF IDeP

The current Integrated Development Plan is for the period 2023-2027 and hence requires an annual review for the period 2024-2025.

MIN: MOE/BOARD/MEETING/48/2023/2024 AOB

1. That the Municipality develops a Disability Mainstreaming Policy
2. Mr. Benjamin appreciated the goodwill wishes from the members after he was admitted in hospital

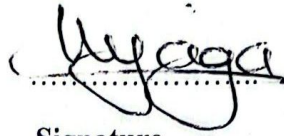
MIN: MOE/BOARD/MEETING/49/2023/2024 ADJOURNMENT

There being no other business the meeting ended at 1500 HRS with closing prayer said by Susan Kaguongo.

Minutes taken by:

Catherine N. Nyaga

(Municipal Manager/ Secretary)



Signature

31/01/2024

Date

Minutes confirmed by:

Dr. Esther W. Nthiga

(Chairperson)



Signature

28/8/2024

Date

EMBU COUNTY GOVERNMENT



Mobile: +254 771 204 003 / +254 703 192 924 Tel: +254 30686 / 30656
 Address: P.O. Box 36 - 60100 Embu, Location: Embu Town House
 Email: info@embu.go.ke Website: www.embu.go.ke

MINISTRY OF LAND, MINING, HOUSING, PHYSICAL PLANNING AND URBAN DEVELOPMENT

MUNICIPALITY OF EMBU

ATTENDANCE LIST DURING THE FIRST QUARTER 2024-2025 PUBLIC PARTICIPATION HELD AT
 TALENT ACADEMY Date... 22/08/2024

S/No	Name	Occupation	ID Number	Sign
1.	MUNIRA WANTA	NURSE	32473171	MWS
2.	Brenda Mutiani	Chief	33603020	CEL
3.	Tabitha Karanja	Salon	40300712	KT
4.	Francis Mwalolo	Driver	27325976	FD
5.	Allan Brian	Fire man	52435417	AKH
6.	MARTIN LUKUNDI	BUSINESS MAN	37443552	N
7.	Samuel Muchangi	Barber	21201410	AP
8.	Samuel Mwachira	Business	20745741	Geo
9.	Blessing Kattume	Artist	23577152	OS
10.	Mary Njoki	Community mobilizer	20850513	HE
11.	ZAINABU ABDALLAH	NURSE	52430417	EL
12.	Wesley Koinet	Driver	5541137	IF
13.	MIRIAM MUKURI	Salon	25981425	MWA
14.	Eloy Gatwiri	Business	29920240	Uby
15.	Fatuma Abdalla	Vendor	27015641	S
16.	CAROLINE KIANJIRU	BUSINESS	361455	GR4
17.	Madrina Kamugunda	Comdly	3150512	EL
18.	Georgina Njiragu	Driver	27920242	EL
19.	Margaretine Mutai	Salon	29419402	S
20.	Sandra Mburu	Acchess	33914762	SD

EMBU COUNTY GOVERNMENT



Mobile:+254 771 204 003/+254 703 192 924 Tel:+25430686/30656
 Address: P.O. Box 36 - 60100 Embu, Location: Embu Town House
 Email: info@embu.go.ke Website: www.embu.go.ke

MINISTRY OF LAND, MINING, HOUSING, PHYSICAL PLANNING AND URBAN DEVELOPMENT

MUNICIPALITY OF EMBU

ATTENDANCE LIST DURING THE FIRST QUARTER 2024-2025 PUBLIC PARTICIPATION HELD AT

Date..... 22/05/2024

TALENT ACADEMY

S/No	Name	Occupation	ID Number	Sign
1.	MARTI NTOKI	Banker	26851394	<i>[Signature]</i>
2.	Lenis Muriu	Driver	3545113T	<i>[Signature]</i>
3.	<i>[Signature]</i>	Salon	3305004	<i>[Signature]</i>
4.	JOSEPHINE KHEMBO	Header	24575432	<i>[Signature]</i>
5.	<i>[Signature]</i>	Maid	21455717	<i>[Signature]</i>
6.	Monica Kariure	Artist	33974412	<i>[Signature]</i>
7.	Emily Muisami	Teacher	25971428	<i>[Signature]</i>
8.	Scalastica Wangari	Header	20479100	<i>[Signature]</i>
9.	Miriam Karimi	Home help	37145366	<i>[Signature]</i>
10.	Fatuma Abdalla	Chief	12577773	<i>[Signature]</i>
11.	Caroline Muisami	House wife	30853600	<i>[Signature]</i>
12.	Purity Mukami	Header	31305812	<i>[Signature]</i>
13.	Machire Wangari	Vender	29926042	<i>[Signature]</i>
14.	Georgy Gathoni		25634644	<i>[Signature]</i>
15.	Apes Karim	Salon	36049820	<i>[Signature]</i>
16.	Faustina Kariure	Driver	21904121	<i>[Signature]</i>
17.	Mike Kariure	BUSINESSMAN	208761	<i>[Signature]</i>
18.	Lamar Collins	Car repair	11089420	<i>[Signature]</i>
19.	Abi Hassan	Chief	35412071	<i>[Signature]</i>
20.	Brian Muriu	Student	3824921	<i>[Signature]</i>